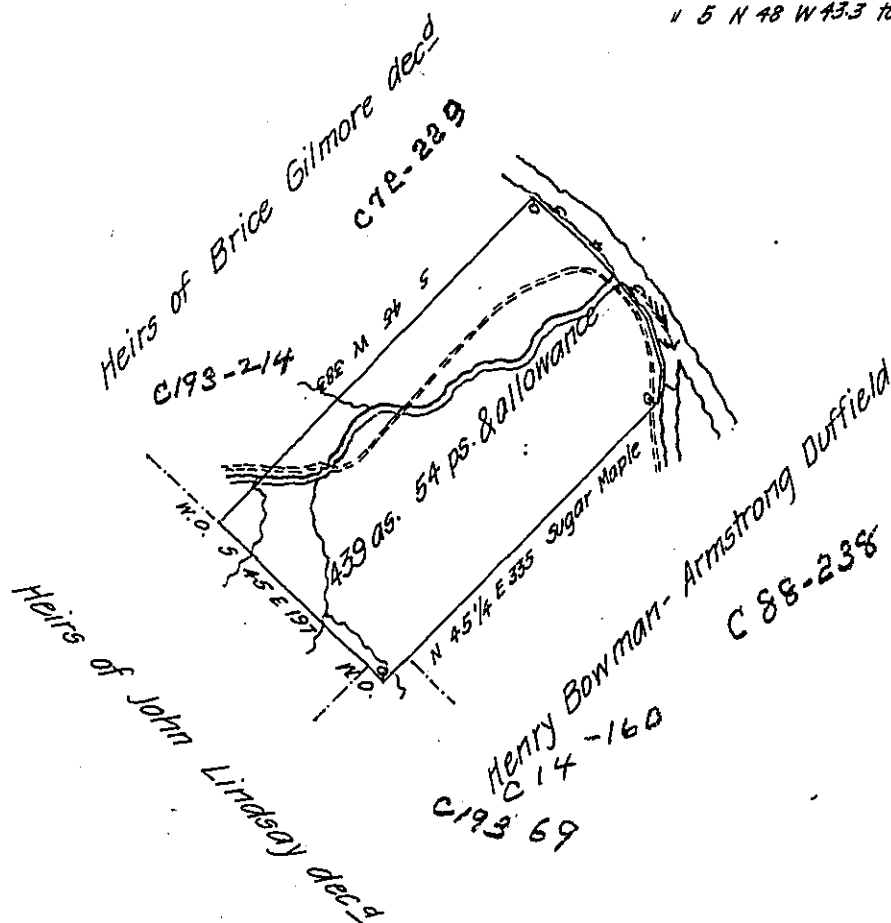


Courses & distances up French Creek from Sugar Maple.

- No 1 N 5 E 27
- " 2 N 17 W 46
- " 3 N 35 W 40
- " 4 N 44 W 58
- " 5 N 48 W 33 to Black Jack.



Draft of a tract of land situate in French creek township Venango County west of the Allegheny River south and west of and adjoining French creek and including Mill creek at the mouth thereof.

Surveyed 30th November 1831 in pursuance of a warrant granted to Abner Scott dated 21st April 1794

Rich^d Irwin D.S.

Jacob Spangler Esq^r

Surveyor General of Pa.

IN TESTIMONY that the above is a copy of the original remaining on file in the Department of Internal Affairs of Pennsylvania, made conformably to an Act of Assembly approved the 16th day of February, 1833, I have hereunto set my Hand and caused the Seal of said Department to be affixed at Harrisburg, this tenth day of March 1908

Henry Howell
Secretary of Internal Affairs.